

## General information

The lifting points are been designed and welded by Xeamos to the unit and are intended **solely for lifting the complete unit as delivered.**

Dangerous



Warning



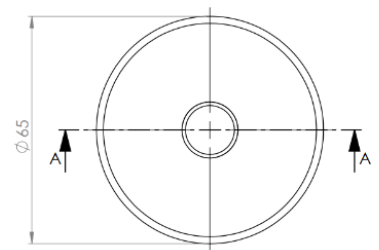
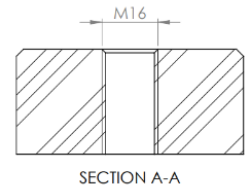
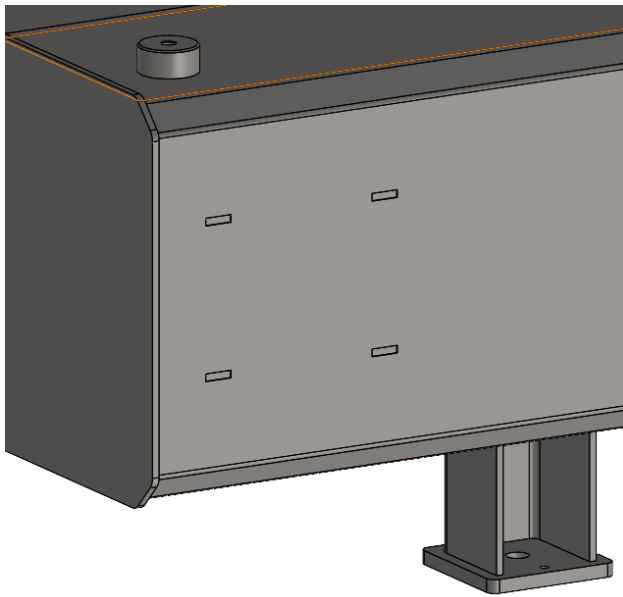
Caution



Notification



## Pictures / drawings



## Data

Fasteners: M16 connection, max 30mm thread  
 Electrical: n.a.  
 Urea: n.a.  
 Compressed air: n.a.  
 Fuel: n.a.  
 Air: n.a.  
 Working Load limit: max 2000 kg per lifting point  
 Ambient Temperature: 5-40°C

**WARNING** Exceeding these limits is **not permitted**

## Important

**WARNING** Connect lifting eyes before lifting the unit

**WARNING** The lifting point is **not a lifting device**, but a **connection point** for lifting equipment

**CAUTION** Maximum weight per lifting point 2000kg

**CAUTION** Maximum sling angle 60°

## Installation instruction Lifting points

### Installation steps

Check the General Arrangement Drawing with the lifting points, weight and Center of Gravity (COG) marking. Xeamos will weld a number of lifting busses (usually 4) on the frame of the after treatment unit, based on Centre of Gravity and size of the unit.

### Pre-use inspection

Lifting is only permitted if:

- the lifting point is undamaged;
- no visible cracks, deformation or corrosion are present;
- the thread is clean and undamaged;
- the total weight of the unit is known.

### Determination of a lifting plan

This will depend on:

- Actual situation incl. local safety precautions
- Required and available lifting equipment
- General Arrangement drawing (indicating maximum weight and Centr of Gravity)
- Requirements lifting eyes
- Requirements lifting slings
- Required checks
- Required service and maintenance

**NOTICE** It is the responsibility of the user to determine the lifting plan and the execution of it.

### Use of lifting eyes

- Use certified lifting eyes suitable for:
  - M16 thread;
  - actual applied load;
  - sling angle.
- Screw the lifting eye fully into the thread until the shoulder is flush with the surface.
- Tighten according instruction manual lifting eyes.

**CAUTION** Do not use extensions, hammers or levers for tightening.

### Lifting operation

- Load all lifting points **evenly**.
- Lift:
  - smoothly and without shock loading;
  - without tilting or torsional forces;
  - without additional attached loads.

**WARNING** The lifting point must **not** be used for pulling, lashing or securing loads.

### Liability

Incorrect use, deviation from the intended lifting method or use of unsuitable lifting equipment is entirely the responsibility of the user.

**NOTICE** Any resulting damage or injury **cannot be claimed against the manufacturer**.

### Common used abbreviations:

LC= Lashing capacity  
 WLL\_SF5 = Working Load Limit with Safety Factor 5  
 CMU = Carga Maxima de Utilization  
 SWL= Safe working Load